

FTB-200 v2 Compact Platform

THE INTELLIGENT PLATFORM BUILT FOR THE SUPERTECH



The FTB-200 v2 delivers the best performance on the market for optical, Ethernet and SONET/SDH testing.

KEY FEATURES

Intel ATOM processor with Windows Embedded Standard for maximized productivity and unique versatility

Flexible connectivity with USB, mobile, Wi-Fi and Bluetooth capabilities

Compatible with 11 families of modules for multiple field testing applications

- > CWDM network characterization at eight wavelengths
- > 40G and ROADM commissioning with an optical spectrum analyzer
- > Multiservice testing with a next-generation SONET/SDH analyzer
- > Fiber characterization and construction with OTDR, loss, dispersion and multitest modules
- > Business service activation with OTDR and Ethernet test modules
- > Carrier Ethernet testing from 10 Mbit/s to 10 Gbit/s

A PROVEN SUCCESS MADE EVEN BETTER

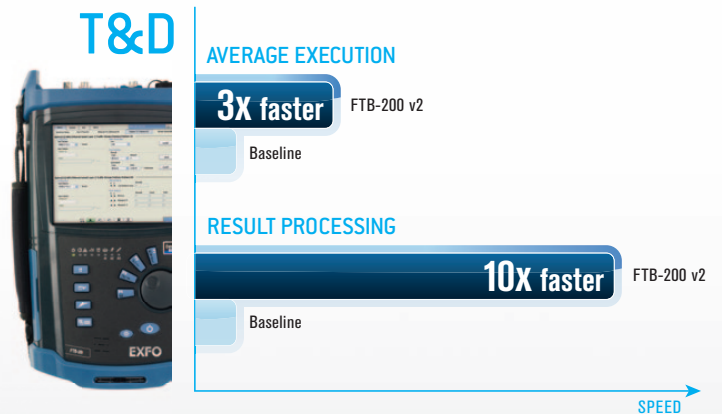
Since its introduction in 2006, the FTB-200 has set the standard for application-driven test solutions. It just made sense to build on this already smart platform and offer our customers the best compact platform yet: the FTB-200 v2.

With tens of thousands of platforms deployed worldwide, EXFO interacted closely with customers who use the platforms everyday to incorporate key functionalities that enhance and simplify their testing environments—including wireless and mobile connectivity, web browsing, PDF printing, screen capture and VT100 terminal emulation.

Today's multimedia networks demand flexible, efficient and cost-effective test solutions. The FTB-200 v2 offers unprecedented speed and an expanded integrated tool kit for increased autonomy and productivity in multiservice field testing.

DELIVERING UNIQUE PERFORMANCE

Providing the same compatibility as its predecessor, the FTB-200 v2 platform now leverages a powerful Intel ATOM processor to deliver unmatched speed and performance for the most demanding test applications.



THE POWER YOU NEED, NO MATTER THE APPLICATION

The FTB-200 v2 delivers the processing power of a high-end platform for a variety of advanced applications—all in a conveniently sized go-anywhere field-testing tool.

CWDM

CWDM Turn-up Testing

Integrate two metro/CWDM OTDRs to test through CWDM-based mux/demux at ITU-recommended wavelengths.

ROADM and PTN

40G and ROADM Commissioning

House an OSA into a compact portable solution for fast and accurate DWDM commissioning and high-speed networking—up to 40 Gbit/s.

Multiservice

Multiservice Testing

Simultaneously run a 10 gigabit next-generation SONET/SDH analyzer, as well as 1 gigabit and 10 gigabit Ethernet analyzers, delivering IPTV test capabilities and TCP throughput assessment.

Fiber

Fiber Characterization and Construction

Combine PMD, CD and OTDR testing in a single solution, and incorporate an OTDR with a multitest module, for in-depth link characterization.

Service Activation

Business Service Activation

Join an FTTx PON/MDU OTDR featuring a dynamic range of up to 39 dB with a 1/10 gigabit Ethernet testing module, to simplify and speed up the deployment of Ethernet services.

Carrier Ethernet

Carrier Ethernet Testing from 10 Mbit/s to 10 Gbit/s

Benefit from a comprehensive suite of Ethernet testing capabilities, including EtherSAM (ITU-T Y.156sam), for turn-up and troubleshooting of mobile backhaul, commercial and wholesale services.

EtherSAM
The new standard in Ethernet service testing



ONE PLATFORM, OVER 30 MODULES

Optimized for all phases of the network lifecycle, the FTB-200 v2 houses any of EXFO's FTB one- or two-slot modules to meet your evolving needs. Configure your platform by combining optical, transport and datacom modules to cover a wide range of applications. Offering power, speed and modularity in a compact format, the FTB-200 v2 is the perfect tool for the field.

Optical Test Modules

Discover the industry's most renowned line of OTDRs, the most advanced dispersion analyzers and optical spectrum analyzers.

OPTICAL TEST MODULES	
OTDR	FTB-7xxx (D-E Series)
MultiTest Module	FTB-3930
Optical Spectrum Analyzers	FTB-5240S FTB-5240S-P
Single-Ended Dispersion Analyzer	FTB-5700

Transport and Datacom Test Modules

Choose from the most compact and powerful SONET/SDH, OTN, Fibre Channel and Ethernet analyzers—the new standards in next-generation network testing.

TRANSPORT AND DATACOM TEST MODULES	
DSn/PDH and SONET/SDH Electrical Test Module	FTB-8105 Transport Blazer
SONET/SDH Test Module	FTB-8115 Transport Blazer
Next-Generation SONET/SDH Test Modules	FTB-8120/8130 Transport Blazer
Multiservice Test Modules	FTB-8120NGE/8130NGE Power Blazer
Ethernet Test Modules	FTB-8510/8510B Packet Blazer
10 Gigabit Ethernet Test Module	FTB-8510G Packet Blazer
Fibre Channel and Ethernet Test Modules	FTB-8525/8535 Packet Blazer



DESIGNED FOR EFFICIENCY



- 1 LED indicators
- 2 Switch application and keyboard
- 3 Knob
- 4 Power meter and VFL
- 5 Battery
- 6 Stylus
- 7 Two slots to house modules
- 8 USB 2.0 port
- 9 1 GigE port
- 10 FIP port
- 11 Head set
- 12 AC adapter
- 13 Two extra USB 2.0 ports

ADDITIONAL FEATURES

Fully backward compatible with previous modules and their original GUIs

1 GigE and three USB 2.0 ports

Built-in Bluetooth and Wi-Fi support

Windows Remote Assistance and Remote Control features

EXFO fiber inspection probe connector interface

TFT outdoor-enhanced LCD 6.5 inch display

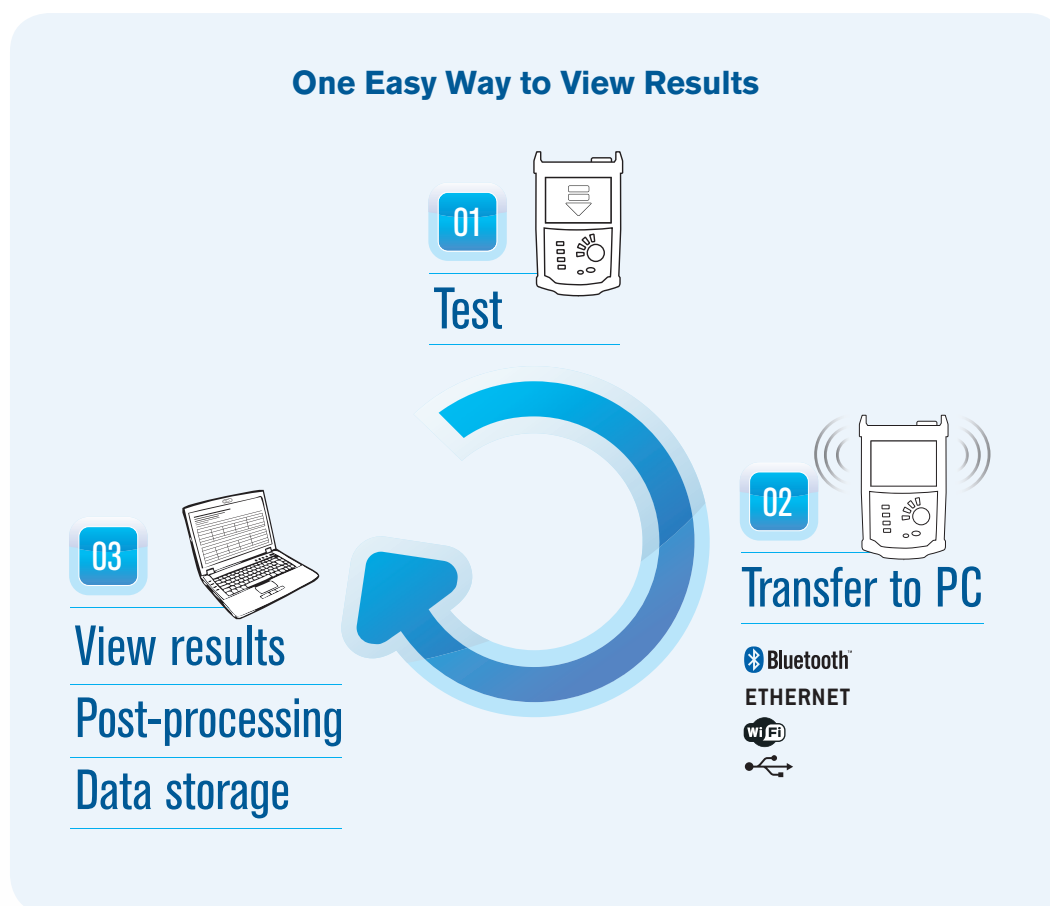
Telcordia (Bellcore)-compliant

Update Manager to stay up-to-date and manage your fleet

TEST, PROCESS, VIEW AND SEND: IT'S THAT EASY

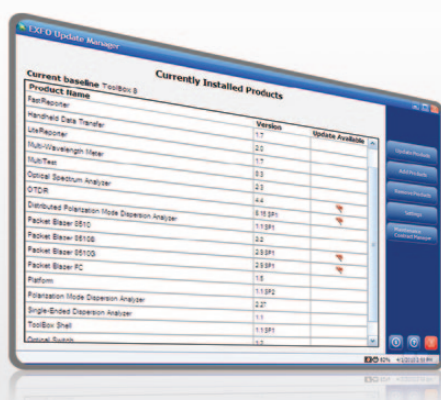
Connectivity

The FTB-200 v2 integrated wireless communication capabilities allow you to send reports anytime, anywhere using mobile, Wi-Fi or Bluetooth networking connections.



Update Manager

Stay current with the FTB-200 v2 Update Manager, which enables you to easily manage the applications developed for your test solution. Thanks to EXFO's feature enhancement program, it has never been easier to benefit from our latest innovation. Based on customer feedback, acute market trend analysis and compliance with the latest standards, EXFO is committed to ensuring that your product is at its best.



SPECIFICATIONS^a

Display	Touchscreen, color, 640 x 480 TFT 163 mm (6.5 in)
Interfaces	Three USB 2.0 ports RJ-45 LAN 10/100/1000 Mbit/s Fiber inspection probe connector port (video) Built-in Bluetooth and Wi-Fi (optional)
Storage	8 GB internal memory (flash) 16 GB USB stick (optional)
Battery	Rechargeable Li-Ion batteries 8 hours of operation as per Telcordia (Bellcore) GR-196
Power supply	AC/DC adapter, input 100-240 VAC, 50-60 Hz, 2 A max, output: 24 VDC, 90 W
Computer	Intel ATOM processor Windows Embedded Standard

GENERAL SPECIFICATIONS

Temperature	
operating	-5 °C to 50 °C (23 °F to 122 °F)
storage ^b	-40 °C to 70 °C (-40 °F to 158 °F)
Relative humidity	0 % to 95 % non-condensing
Size (H x W x D)	322 mm x 197 mm x 109 mm (12 11/16 in x 7 3/4 in x 4 5/16 in)
Weight ^b	2.1 kg (4.6 lb)
Vibration	<1.5 g at 10 Hz to 500 Hz (on three main axes)
Mechanical shock	<760 mm on six sides and eight main edges (compliant to GR-196-CORE)

ACCESSORIES

FP4S	400x Fiber Inspection Probe	GP-2001	USB keyboard
FP4D	200x/400x Fiber Inspection Probe	GP-2016	10 feet RJ-45 LAN cable
GP-10-070	Rigid FTB-200 carrying case	GP-2028	Computer security cable kit
GP-10-072	Semi-rigid FTB-200 carrying case	GP-2116	Single-slot storage module
GP-302	USB mouse	GP-2137	USB-to-RS-232 converter
GP-1002	Headset	GP-2138	DC car adapter/inverter
GP-1008	VFL adapter (2.5 mm to 1.25 mm)	GP-2144	USB 16G micro-drive

PM-200 BUILT-IN POWER METER SPECIFICATIONS^c

Calibrated wavelengths (nm)	850, 1300, 1310, 1490, 1550, 1625, 1650
Optional CWDM calibrated wavelengths (nm)	1270, 1290, 1310, 1330, 1350, 1370, 1390, 1410, 1430, 1450, 1470, 1490, 1510, 1530, 1550, 1570, 1590, 1610, 1383, 1625
Power range (dBm)	10 to -86 (InGaAs) 26 to -64 (GeX)
Uncertainty (%) ^d	±5 % ± 3 pW (InGaAs) ±5 % ± 0.4 nW (GeX)
Display resolution (dB)	
InGaAs	0.01 = max to -76 dBm 0.1 = -76 dBm to -86 dBm 1 = -86 dBm to min
GeX	0.01 = max to -54 dBm 0.1 = -54 dBm to -64 dBm 1 = -64 dBm to min
Automatic offset nulling range ^e	Max power to -63 dBm for InGaAs Max power to -40 dBm for GeX
Tone detection (Hz)	270/1000/2000

VISUAL FAULT LOCATOR (VFL) (OPTIONAL)

Laser, 650 nm ± 10 nm
CW
Typical P _{out} in 62.5/125 μm: 3 dBm (2 mW)

LASER SAFETY



21 CFR 1040.10 AND IEC 60825-1:2007
CLASS 3R WITH VFL OPTION

Notes

- All specifications valid at 23 °C (73 °F).
- Not including internal batteries. Battery maximum storage temperature: 60 °C (140 °F).
- At 23 °C ± 1 °C, 1550 nm and FC connector. With modules in idle mode. Battery operated.
- Up to 5 dBm.
- For ±0.05 dB, from 18 °C to 28 °C.

ORDERING INFORMATION

FTB-200-V2-XX-XX-XX-XX-XX-XX-XX

Model

FTB-200-v2 = Compact modular platform

Display

S1 = TFT active screen

S2 = Outdoor-enhanced screen

Wi-Fi/Bluetooth option

00 = Without RF components

RF = With RF capability (Wi-Fi and Bluetooth)

Power meter

00 = Without power meter

VPM2X = VFL platform; PM; Detector 02X

VPM3 = VFL platform; PM; Detector 03

VPM2X-CWDM = VFL platform; PM; Detector 02X; CWDM
wavelengths calibrated (from 1270 nm to 1610 nm)VPM3-CWDM = VFL platform; PM; Detector 03; CWDM
wavelengths calibrated (from 1270 nm to 1610 nm)**Connector adapter**

FOA-12 = Biconic

FOA-14 = NEC D4: PC, SPC, UPC

FOA-16 = SMA/905, SMA-906

FOA-22 = FC/PC, FC/SPC, FC/UPC, FC/APC

FOA-28 = DIN 47256, DIN 47256/APC

FOA-32 = ST: ST/PC, ST/SPC, ST/UPC

FOA-54 = SC: SC/PC, SC/SPC, SC/UPC, SC/APC

FOA-78 = Radial EC

FOA-96B = E-2000 E-2000/APC

FOA-98 = LC

FOA-99 = MU

WC2 = FOA-FC-ST-SC-LC

ConnectorMax

00 = Without fiber inspection probe analysis software

FPSA = With fiber inspection probe analysis software

Software option

00 = Without software option

IPT = Ping traceroute software

Probe

00 = Without probe

FP4S = Inspection probe (400x)

FP4D = Inspection probe (200x/400x)

Example: FTB-200-v2-S1-RF-VPM2X-FP4S-IPT-FPSA-FOA-16

EXFO Corporate Headquarters > 400 Godin Avenue, Quebec City (Quebec) G1M 2K2 CANADA | Tel.: +1 418 683-0211 | Fax: +1 418 683-2170 | info@EXFO.com

Toll-free: +1 800 663-3936 (USA and Canada) | www.EXFO.com

EXFO America	3701 Plano Parkway, Suite 160	Plano, TX 75075 USA	Tel.: +1 800 663-3936	Fax: +1 972 836-0164
EXFO Asia	151 Chin Swee Road, #03-29 Manhattan House	SINGAPORE 169876	Tel.: +65 6333 8241	Fax: +65 6333 8242
EXFO China	36 North, 3 rd Ring Road East, Dongcheng District Room 1207, Tower C, Global Trade Center	Beijing 100013 P. R. CHINA	Tel.: + 86 10 5825 7755	Fax: +86 10 5825 7722
EXFO Europe	Omega Enterprise Park, Electron Way	Chandlers Ford, Hampshire S053 4SE ENGLAND	Tel.: +44 2380 246810	Fax: +44 2380 246801
EXFO NetHawk	Elektronikkatie 2	FI-90590 Oulu, FINLAND	Tel.: +358 (0)403 010 300	Fax: +358 (0)8 564 5203
EXFO Service Assurance	270 Billerica Road	Chelmsford, MA 01824 USA	Tel.: +1 978 367-5600	Fax: +1 978 367-5700

EXFO is certified ISO 9001 and attests to the quality of these products. This device complies with Part 15 of the FCC Rules. Operation is subject to the following two conditions: (1) this device may not cause harmful interference, and (2) this device must accept any interference received, including interference that may cause undesired operation. EXFO has made every effort to ensure that the information contained in this specification sheet is accurate. However, we accept no responsibility for any errors or omissions, and we reserve the right to modify design, characteristics and products at any time without obligation. Units of measurement in this document conform to SI standards and practices. In addition, all of EXFO's manufactured products are compliant with the European Union's WEEE directive. For more information, please visit www.EXFO.com/recycle. Contact EXFO for prices and availability or to obtain the phone number of your local EXFO distributor.

For the most recent version of this spec sheet, please go to the EXFO website at www.EXFO.com/specs.

In case of discrepancy, the Web version takes precedence over any printed literature.